



**Addendum No. 1
Erie International Airport
Realignment and Rehabilitation of Taxiway A –
Phase 3**

Realignment & Reconstruction

Project name: <u>of Taxiway A – Phase 3</u>	Client: <u>Erie Regional Airport Authority</u>
Project location: <u>Erie, PA</u>	Client representative: <u>Kimberlie Sharrer</u>
Project number: <u>3225600-192499.05</u>	Mead & Hunt, Inc. Manager: <u>Byron Henicle</u>
Date: <u>May 31, 2024</u>	Mead & Hunt Inc. Phone: <u>971-256-9307</u>

TO ALL BIDDERS: You are requested to make all changes and/or additions contained in this Addendum to the Bidding Documents. Failure to acknowledge this Addendum in Proposal may result in rejection of bid. **THIS ADDENDUM INCLUDES NEW PRICE FORMS. INCLUDE THESE UPDATED FORMS WITH BID.**

I. GENERAL

A. Add pre-bid conference notes and sign in sheet (attached below)

II. GENERAL QUESTIONS AND ANSWERS

Q1 Is there a sign schedule available for the above mentioned project? Please confirm the size & style, as well as the message for the new guidance signs in bid items 125001 & Alt 125002.

A1 Sign shall be Size 2 Style 2 for the taxiway circuit. Sign shall be Size 2, Style 3 for the runway circuit. See Detail 5 “Size 2 Guidance Sign Installation” Sheet E-601.

Q2 I just finished looking over the Taxiway A project at Erie International and I don't see a sign schedule. Is there something I am missing?.

A2 See A1 above

III. PROJECT MANUAL

Price Form

REPLACE Base Bid – Price Form, and Alternative 1 – Price Form. See attached sheets.

Item L-125 Installation of Airport Lighting Systems

REVISE Basis of Payment as follows:

Item 125003 L-858(L) Reinstall Guidance Sign on new Base (Bid Alternative 1) – each

Item 125004 L-861T(L) Elevated Medium Intensity Taxiway Light, Base Mounted in Turf – each

Item 125005 L-861T(L) Elevated Medium Intensity Taxiway Light, Base Mounted in Turf

(Bid Alternative 1) – each

Item **125006** L-861T(L) Elevated medium Intensity Taxiway Light, Reinstall on New Base in Turf – each

Item **125007** Electrical and Communication Investigation – Lump Sum

IV. DRAWINGS

REPLACE Sheets G-003 and E-201. See attached.

V. Attachments

Base Bid – Price Form and Alternate 1 – Price Form

Prebid meeting notes

Prebid sign-in sheet

Sheet G-003 and E-201

END OF ADDENDUM 1

BASE BID - PRICE FORM
Realignment & Reconstruction of Taxiway A – Phase 3
Erie International Airport
Erie, Pennsylvania

Failure to complete this form and submit by the Bid Deadline shall result in your Bid being deemed nonresponsive and rejected without any further evaluation.

The Airport Authority reserves the right to change the Estimated Quantities and their respective Item Sub-total and Total Price based on requirements of the Project. The successful Bidder (Contractor) will be paid for quantities installed in accordance with the Basis of Payment section of the Specifications. Unit Prices provided on this Price Form will be the prices used for any quantity additions and deductions required. The Bidder must complete the Price Form either by hand writing in ink or typing prices in the spaces provided. Bidders must provide a Unit Price for all items.

ITEM NO.	ITEM DESCRIPTION	UNIT	ESTIMATED QUANTITY	UNIT PRICE	ITEM SUBTOTAL
5011	Restore and Repair Haul Routes	T&M	20,000	-	\$20,000.00
100001	Contractor Quality Control Program (CQCP)	LS	1		
102001	Temporary Erosion and Sediment Controls	LS	1		
105001	Mobilization, 10% Maximum	LS	1		
105002	Safety and Security	LS	1		
105004	Permits	DLR	10,000	-	\$10,000.00
105005	Engineer's Field Office	LS	1		
101001	Pavement Removal, Asphalt	SYD	5,845		
101003	Bituminous Cold Milling, Variable Depth	SYD	3,048		
101005	Remove Drainage Structure	EA	4		
101007	Remove Storm Sewer	LFT	1,170		
101009	Remove Underdrain	LFT	960		
101012	Remove Electrical Handhole	EA	1		
101014	Remove Elevated Edge Light and Base	EA	13		
101016	Remove Guidance Sign and Base	EA	2		
101019	Sawing Asphalt Pavement	LFT	675		
152001	Unclassified Excavation	CYD	1,650		
152003	Subgrade Undercut	CYD	150		
154001	Subbase Course	CYD	2,650		
154003	Separation Geotextile	SYD	4,250		
209001	Crushed Aggregate Base Course	CYD	750		
401001	Asphalt Surface Course, Gradation 2	TON	1,600		
403001	Asphalt Mixture Base Course, Gradation 2	TON	1,250		
603001	Emulsified Asphalt Tack Coat	GAL	1,360		
620001	Surface Preparation	LS	1		
620004	Airport Pavement Marking, Solid, Yellow, 1/2 Rate	SFT	600		
620007	Airport Pavement Marking, Solid, Black	SFT	1,150		
620010	Airport Pavement Marking, Solid, Yellow, with Reflective Bead	SFT	600		
701001	12" Corrugated Polyethylene Pipe	LF	97		
701002	24" Corrugated Polyethylene Pipe	LF	142		
701004	12" Reinforced Concrete Pipe	LF	97		
701005	24" Reinforced Concrete Pipe	LF	203		
705001	6" Corrugated Perforated Polyethylene Pipe complete, including porous backfill and filter fabric	LF	1,091		
751001	Inlet, Triple Grate	EA	1		
751003	6' Diameter Manhole	EA	2		
751004	Aircraft Rated Handhole	EA	6		

ITEM NO.	ITEM DESCRIPTION	UNIT	ESTIMATED QUANTITY	UNIT PRICE	ITEM SUBTOTAL
751006	Structure Grade Adjustment	VF	1		
108001	No. 8 AWG, 5kV, L-824, Type C Cable, Installed in Trench, Duct Bank or Conduit	LFT	1,550		
110001	Non-Encased Electrical Conduit, 1-Way 1 1/4 Inch	LFT	1,550		
115001	Electrical Handhole, Aircraft Rated	EA	1		
125001	L-858(L) Guidance Sign, Base Mounted	EA	2		
125004	L-861T(L) Elevated Medium Intensity Taxiway Light, Base Mounted in Turf	EA	17		
125006	L-861T(L) Elevated Medium Intensity Taxiway Light, Reinstall on New Base in Turf	EA	2		
125007	Electrical and Communication Investigation	LS	1		
901001	Seeding	AC	2		
905001	Topsoil (Obtained on Site or Removed from Stockpile)	CY	2,000		
908001	Mulching, Netted/Binded	SY	12,000		

LIST ITEMS BELOW THIS LINE BY AMENDMENT

Base Bid Price = \$ _____
 (Amount in Numerals)

ALTERNATIVE 1 - PRICE FORM
Realignment & Reconstruction of Taxiway A – Phase 3
Erie International Airport
Erie, Pennsylvania

Failure to complete this form and submit by the Bid Deadline shall result in your Bid being deemed nonresponsive and rejected without any further evaluation.

The Airport Authority reserves the right to change the Estimated Quantities and their respective Item Sub-total and Total Price based on requirements of the Project. The successful Bidder (Contractor) will be paid for quantities installed in accordance with the Basis of Payment section of the Specifications. Unit Prices provided on this Price Form will be the prices used for any quantity additions and deductions required. The Bidder must complete the Price Form either by hand writing in ink or typing prices in the spaces provided. Bidders must provide a Unit Price for all items.

ITEM NO.	ITEM DESCRIPTION	UNIT	ESTIMATED QUANTITY	UNIT PRICE	ITEM SUBTOTAL
102002	Temporary Erosion and Sedimentation Controls (Alternative 1)	LS	1		
105003	Safety and Security (Alternative 1)	LS	1		
101002	Pavement Removal, Asphalt (Alternative 1)	SYD	6,050		
101004	Bituminous Cold Milling, Variable Depth (Alternative 1)	SYD	880		
101006	Remove Drainage Structure (Alternative 1)	EA	6		
101008	Remove Storm Sewer (Alternative 1)	LFT	505		
101010	Remove Underdrain (Alternative 1)	LFT	1,405		
101011	Remove Electrical Junction Can (Alternative 1)	EA	2		
101013	Remove Electrical Handhole (Alternative 1)	EA	2		
101015	Remove Elevated Edge Light and Base (Alternative 1)	EA	12		
101017	Remove Guidance Sign and Base (Alternative 1)	EA	3		
101018	Remove Concrete Encased Electrical Duct Bank (Alternative 1)	LFT	240		
101020	Sawing Asphalt Pavement (Alternative 1)	LFT	805		
152002	Unclassified Excavation (Alternative 1)	CYD	4,000		
152004	Subgrade Undercut (Alternative 1)	CYD	150		
154002	Subbase Course (Alternative 1)	CYD	3,100		
154004	Separation Geotextile (Alternative 1)	SYD	4,650		
209002	Crushed Aggregate Base Course (Alternative 1)	CYD	800		
401002	Asphalt Surface Course, Gradation 2 (Alternative 1)	TON	1,200		
403002	Asphalt Mixture Base Course, Gradation 2 (Alternative 1)	TON	1,400		
603002	Emulsified Asphalt Tack Coat (Alternative 1)	GAL	1,400		
620002	Surface Preparation (Alternative 1)	LS	1		
620003	Airport Pavement Marking, Solid, White, 1/2 Rate (Alternative 1)	SFT	350		
620005	Airport Pavement Marking, Solid, Yellow, 1/2 Rate (Alternative 1)	SFT	2,350		
620006	Airport Pavement Marking, Solid, Red, 1/2 Rate (Alternative 1)	SFT	1,000		
620008	Airport Pavement Marking, Solid, Black (Alternative 1)	SFT	4,600		
620009	Airport Pavement Marking, Solid, White, with Reflective Beads (Alternative 1)	SFT	350		
620011	Airport Pavement Marking, Solid, Yellow, with Reflective Beads (Alternative 1)	SFT	2,700		
620012	Airport Pavement Marking, Solid, Red, with Reflective Beads (Alternative 1)	SFT	1,000		
701003	24" Corrugated Polyethylene Pipe (Alternative 1)	LF	1,600		
701006	18" Reinforced Concrete Pipe (Alternative 1)	LF	400		
705002	6" Corrugated Perforated Polyethylene Pipe complete, including porous backfill and filter fabric (Alternative 1)	LF	1,400		
705003	6" Corrugated Polyethylene Pipe (Alternative 1)	LF	214		
751002	Inlet, Triple Grate (Alternative 1)	EA	1		

ITEM NO.	ITEM DESCRIPTION	UNIT	ESTIMATED QUANTITY	UNIT PRICE	ITEM SUBTOTAL
751005	Aircraft Rated Handhole (Alternative 1)	EA	7		
751007	Inlet, Double Grate (Alternative 1)	EA	2		
751008	5' Diameter Manhole (Alternative 1)	EA	2		
108002	No. 8 AWG, 5kV, L-824, Type C Cable, Installed in Trench, Duct Bank or Conduit (Alternative 1)	LFT	3,000		
110002	Non-Encased Electrical Conduit, 1-Way 1 1/4 Inch (Alternative 1)	LFT	1,380		
110003	Concrete Encased Electrical Ductbank, 4W 2 Inch (Alternative 1)	LFT	240		
115002	Electrical Handhole, Aircraft Rated (Alternative 1)	EA	2		
115003	Electrical Junction Can (Alternative 1)	EA	2		
125002	L-858(L) Guidance Sign, Base Mounted (Alternative 1)	EA	2		
125003	L-858(L) Reinstall Guidance Sign on New Base (Alternative 1)	EA	1		
125005	L-861T(L) Elevated Medium Intensity Taxiway Light, Base Mounted in Turf (Alternative 1)	EA	9		
130001	Furnish and Install Surface Sensor Cable, Vaisala Type V Multi-Conductor (Alternative 1)	LFT	4,350		
901002	Seeding (Alternative 1)	AC	2		
905002	Topsoil (Obtained on Site or Removed from Stockpile)(Alternative 1)	CY	1,800		
908002	Mulching, Netted/Binded (Alternative 1)	SY	10,800		

LIST ITEMS BELOW THIS LINE BY AMENDMENT

Alternative 1 Bid Price = \$ _____
 (Amount in Numerals)



**Erie International Airport
Pre-Bid Meeting Agenda
Realignment & Reconstruction of Taxiway A –
Phase 3
Meeting Notes**

Project name:	Realign & Recon Taxiway A Phase 3	Client:	Erie Airport Authority
Project location:	Erie International Airport, Tom Ridge Field, 4411 West 12 th Street, Erie PA 16505-0393	Client representative:	Derek Martin
Project numbers:	M&H: 3225600-192499.05	M&H, Inc. Project manager:	Byron Henicle
Date:	May 23, 2024	Mead & Hunt, Inc. phone:	971-256-9307

Items to be discussed are as follows:

01. INTRODUCTIONS

02. OWNER’S REPRESENTATIVES

- A. Erie International Airport
 - 1. Derek Martin – Executive Director
 - 2. Kimberlie Scharrer – Director of Administration
 - 3. Ian Bogle – Director of Public Safety and Facilities
 - 4. Drew Feiock – Director of Operations

03. DESIGN TEAM

- A. M&H Team contacts
 - 1. Byron Henicle: Project Manager, Mead & Hunt
 - 2. Ryan Martin: Project Engineer, Mead & Hunt
 - 3. Sean Thompson: Client Manager, Mead & Hunt
 - 4. Raena Lindemuth: Drainage and E&S Designer, McFarland Johnson
 - 5. AJ Irwin: Resident Project Representative (RPR), McFarland Johnson

04. PROJECT BID DOCUMENTS

- A. Bid Documents are available on the Erie International Airport website under Business Opportunities or www.erieairport.org/doing-business-with-the-authority/businessopportunities.
 - 1. Project Manual
 - 2. Plans
 - 3. Construction Safety and Phasing Plan

05. THE SCOPE OF WORK FOR THE PROJECT CONSISTS OF:

This project consists of realignment and reconstruction of the airport's asphalt taxiway A. included in this project is pavement demolition, excavation, storm sewer installation, subbase and base course, asphalt paving, and airfield electrical.

06. BID SUBMITTAL ITEMS:

- A. Bid Guaranty in the form of proposal bond/cashier's check/certified check – 5%
- B. Bid Form
- C. Acknowledgements by Bidder
- D. Signature of Bidder
- E. Completed DBE forms "Utilization Statement" and "Letter of Intent" (DBE – 5.8%)
- F. Buy America Certifications
- G. Trade Restriction Certification
- H. Tax Delinquency and Felony Convictions
- I. Certification Regarding Lobbying
- J. Non-Collison Affidavit
- K. Contractor's Certification of Non-Segregated Facilities
- L. Commonwealth of Pennsylvania – Public Works Employment Verification Form
- M. Evidence of good faith efforts required by 49 CFR Part 26, Appendix A. If proposed DBE goal is met, submittal of evidence of good faith efforts is not required
- N. Evidence of BIDDER'S qualifications per the requirements of General Provisions, Section 20-02 Qualification of Bidders
 - 1. If PennDOT prequalification is submitted, work classifications of F and H shall be required to be provided by the Bidder or Bidder's subcontractor(s).

07. DBE GOAL 5.8%

08. DAVIS-BACON WAGE RATES

09. PROPOSED SCHEDULE

- A. Pre-Bid Conference
 - 1. May 23, 2024 10:30 am
- B. Project Site Walk thru following Pre-Bid Meeting
- C. Bids Due
 - 1. June 13, 2024, at 10:30 am in waiting area at Erie International Airport

-
- D. Construction Schedule (60 calendar days)
 - 1. Tentative Start June 2025
 - 2. Tentative Completion August 2025

10. PROJECT PHASING DEPICTED ON G-101 AND G-151

- A. Phase 1: Construction of Taxiway A outside of Runway Safety Area (RSA) and Taxiway D Taxiway Object Free Area (TOFA)
 - 1. 60 calendar days (30 CDs Base Bid, 30 CDs Alternative 1)
 - 2. Closure of Taxiway A from D to A3
 - 3. Closure of Taxiway C from Twy A to east of T-hangar access taxilane
- B. Phase 1A: Pavement Work within RSA
 - 1. Completed in between the hours of 11:00 PM and 5:00 AM, coordinate with Airport Operations
 - 2. RSA Compliant at end of shift
- C. Phase 1B: Pavement Work within Taxiway D TOFA
 - 1. Completed within 2 CDs
- D. Phase 2: Final pavement markings
 - 1. 1 calendar day at least 30 days after final paving.
- E. 60 calendar days total for the project.
- F. Contractor supplied gate guard at construction entrance, Powell Ave entrance.
- G. Liquidated Damages Associated with each project phase are outlined in General Provisions Section 80-08 Failure to Complete on Time at \$2,000/calendar day.

11. PROJECT PLANS

- A. C-021 Project Layout Plan
 - 1. Lowest bid will be evaluated by Base Bid
- B. C-301 Typical Pavement Sections
 - 1. 4" P-401 Asphalt
 - 2. 5" P-403 Asphalt
 - 3. 6" P-209 Crushed Aggregate Base Course
 - 4. 21" P-154 Subbase
 - 5. Geotextile Fabric
- C. C-451 Drainage Plan
 - 1. Replacement and consolidation of existing storm sewer
- D. C-651 Pavement Marking Plan
 - 1. Centerline, dashed edge, holdlines, enhanced CL, SPHPS

-
- E. E-201 Electrical Plan
 - 1. New edge lighting and signage
 - 2. Recabling of duct crossing Taxiway D and Taxiway D
 - 3. Recabling of pavement condition sensor cable

12. SECURITY

- A. Badging is required for this project. A badged person may escort unbadged personnel as long as they are in reasonable control. Badging information can be found at the airport's website. <https://www.erieairport.org/doing-business-with-the-authority/airport-badging/>

13. SUMMARY

- A. Questions or comments
- B. Next Steps
 - 1. Site walk
 - 2. Addendum 01 following meeting with any questions and meeting notes

14. QUESTIONS

- Q1 Will the underdrain go through the transition area?
- A1 Yes, there is a small section of the taxiway transition that the underdrain will traverse through.

- Q2 The base bid looks like more fill, could we share how much import we anticipate?
- A2 See revised Bid Schedules.

- Q3 Is the pavement transition shown anywhere on the plans?
- A3 Details of the pavement transition are designed if Alternate 1 is not awarded and that transition design will be provided to the successful bidder. The base bid includes quantity to construct the transition.

- Q4 What is the runway area work?
- A4 Work within Runway 6/24 Runway Safety Area (RSA) includes paving, electrical, and marking work on Taxiway D. Also included in the RSA work is cable work associated with pavement condition sensors.

- Q5 Where on the project is the matting that is shown in the E&S details to be installed?
- A5 The E&S detail is for the entire Taxiway A program. No matting is required. Hydro mulch can be used. No straw can be used for matting.

15. ATTENDANCE

- A. See attached sign-in sheet



PRE-BID MEETING SIGN-IN SHEET

PROJECT: Realignment and Reconstruction of Taxiway A – Phase 3

DATE: Thursday May 23, 2024

PLACE: Terminal Waiting Area

NAME	REPRESENTING	E-MAIL ADDRESS	PHONE NO.
Byron Henicle	Mead & Hunt	byron.henicle@meadhunt.com	971-256-9307
Drew Feiock	ERAA	dfeiock@erieairport.org	814 450 3798
DAN MANUS	KIRFLA	MANUS@KIRFLA.COM	330-448-4055
Raena Lindemuth	McFarland Johnson	rlindemuth@mjinc.com	814-590-1877
AJ Irwin	McFarland Johnson	airwin@mjinc.com	814-602-3362
IAN BOGLE	ERAA	IBOGLE@ERIEAIRPORT.ORG	814 450 3824
Phil Hannah	Lindy	Phil.Hannah@LindyPerz.com	412 287 9282
Kim Scharrer	ERAA	kscharrer@erieairport.org	814-833-4258

SUMMARY OF CONTRACT QUANTITIES

BASE BID

BID ALTERNATE 1

ITEM DESCRIPTION	UNIT	QTY
5011 Restore and Repair Haul Routes	T&M	1
100001 Contractor Quality Control Program (CQCP)	LS	1
102001 Temporary Erosion and Sedimentation Controls	LS	1
105001 Mobilization, 10% Maximum	LS	1
105002 Safety and Security	LS	1
105004 Permits	DLR	10,000
105005 Engineer's Field Office	LS	1
101001 Pavement Removal, Asphalt	SYD	5,845
101003 Bituminous Cold Milling, Variable Depth	SYD	3,048
101005 Remove Drainage structure	EA	4
101007 Remove Storm Sewer	LFT	1,170
101009 Remove Underdrain	LFT	960
101012 Remove Electrical Handhole	EA	1
101014 Remove Elevated Edge Light and Base	EA	13
101016 Remove Guidance Sign and Base	EA	2
101019 Sawing Asphalt Pavement	LFT	675
152001 Unclassified Excavation	CYD	1,650
152003 Subgrade Undercut	CYD	150
154001 Subbase Course	CYD	2,650
154003 Separation Geotextile	SYD	4,250
209001 Crushed Aggregate Base Course	CYD	750
401001 Asphalt Surface Course, Gradation 2	TON	1,600
403001 Asphalt Mixture Base Course, Gradation 2	TON	1,250
603001 Emulsified Asphalt Tack Coat	GAL	1,360
620001 Surface Preparation	LS	1
620004 Airport Pavement Marking, Solid, Yellow, 1/2 Rate	SFT	600
620007 Airport Pavement Marking, Solid, Black	SFT	1,150
620010 Airport Pavement Marking, Solid, Yellow, with Reflective Beads	SFT	600
701001 12" Corrugated Polyethylene Pipe	LF	97
701002 24" Corrugated Polyethylene Pipe	LF	142
701004 12" Reinforced Concrete Pipe	LF	97
701005 24" Reinforced Concrete Pipe	LF	203
705001 6" Corrugated Perforated Polyethylene Pipe complete, including porous backfill and filter fabric	LF	1,091
751001 Inlet, Triple Grate	EA	1
751003 6" Diameter Manhole	EA	2
751004 Aircraft Rated Handhole	EA	6
751006 Structure Grade Adjustment	VF	1
108001 No. 8 AWG, 5kV, L-824, Type C Cable, Installed in Trench, Duct Bank or Conduit	LFT	1,550
110001 Non-Encased Electrical Conduit, 1-Way 1 1/4 Inch	LFT	1,550
115001 Electrical Handhole, Aircraft Rated	EA	1
125001 L-858(L) Guidance Sign, Base Mounted	EA	2
125004 L-861T(L) Elevated Medium Intensity Taxiway Light, Base Mounted in Turf	EA	17
125006 L-861T(L) Elevated Medium Intensity Taxiway Light, Reinstall on New Base in Turf	EA	2
125007 Electrical and Communication Investigation	LS	1
901001 Seeding	AC	2
905001 Topsoil (Obtained on Site or Removed from Stockpile)	CY	2,000
908001 Mulching, Netted/Binded	SY	12,000

ITEM DESCRIPTION	UNIT	QTY
102002 Temporary Erosion and Sedimentation Controls (Alternative 1)	LS	1
105003 Safety and Security (Alternative 1)	LS	1
101002 Pavement Removal, Asphalt (Alternative 1)	SYD	6,050
101004 Bituminous Cold Milling, Variable Depth (Alternative 1)	SYD	880
101006 Remove Drainage Structure	EA	6
101008 Remove Storm Sewer	LFT	505
101010 Remove Underdrain	LFT	1,405
101011 Remove Concrete Encased Electrical Duct Bank (Alternative 1)	EA	2
101013 Remove Electrical Handhole (Alternative 1)	EA	2
101015 Remove Elevated Edge Light and Base (Alternative 1)	EA	12
101017 Remove Guidance Sign and Base (Alternative 1)	EA	3
101018 Remove Concrete Encased Electrical Duct Bank (Alternative 1)	LFT	240
101020 Sawing Asphalt Pavement (Alternative 1)	LFT	805
152002 Unclassified Excavation (Alternative 1)	CYD	4,000
152004 Subgrade Undercut (Alternative 1)	CYD	150
154002 Subbase Course (Alternative 1)	CYD	3,100
154004 Separation Geotextile (Alternative 1)	SYD	4,650
209002 Crushed Aggregate Base Course (Alternative 1)	CYD	800
401002 Asphalt Surface Course, Gradation 2 (Alternative 1)	TON	1,200
403002 Asphalt Mixture Base Course, Gradation 2 (Alternative 1)	TON	1,400
603002 Emulsified Asphalt Tack Coat (Alternative 1)	GAL	1,400
620002 Surface Preparation (Alternative 1)	LS	1
620003 Airport Pavement Marking, Solid, White, 1/2 Rate (Alternative 1)	SFT	350
620005 Airport Pavement Marking, Solid, Yellow, 1/2 Rate (Alternative 1)	SFT	2,350
620006 Airport Pavement Marking, Solid, Red, 1/2 Rate (Alternative 1)	SFT	1,000
620008 Airport Pavement Marking, Solid, Black (Alternative 1)	SFT	4,600
620009 Airport Pavement Marking, Solid, White, with Reflective Beads (Alternate 1)	SFT	350
620011 Airport Pavement Marking, Solid, Yellow, with Reflective Beads (Alternative 1)	SFT	2,700
620012 Airport Pavement Marking, Solid, Red, with Reflective Beads (Alternate 1)	SFT	1,000
701003 24" Corrugated Polyethylene Pipe (Alternate 1)	LF	1,600
701006 18" Reinforced Concrete Pipe (Alternate 1)	LF	400
705002 6" Corrugated Perforated Polyethylene Pipe complete, including porous backfill and filter fabric (Alternate 1)	LF	1,400
705003 6" Corrugated Polyethylene Pipe (Alternate 1)	LF	214
751001 Inlet, Triple Grate (Alternate 1)	EA	1
751005 Aircraft Rated Handhole (Alternate 1)	EA	7
751007 Inlet, Double Grate (Alternate 1)	EA	2
751008 5" Diameter Manhole (Alternate 1)	EA	2
108002 No. 8 AWG, 5kV, L-824, Type C Cable, Installed in Trench, Duct Bank or Conduit (Alternative 1)	LFT	3,000
110002 Non-Encased Electrical Conduit, 1-Way 1 1/4 Inch (Alternative 1)	LFT	1,380
110003 Concrete Encased Electrical Ductbank, 4W 2 Inch	LFT	240
115002 Electrical Handhole, Aircraft Rated (Alternate 1)	EA	2
115003 Electrical Junction Can (Alternate 1)	EA	2
125002 L-858(L) Guidance Sign, Base Mounted (Alternative 1)	EA	2
125003 L-858(L) Reinstall Guidance Sign on new Base (Alternative 1)	EA	1
125005 L-861T(L) Elevated Medium Intensity Taxiway Light, Base Mounted in Turf (Alternate 1)	EA	9
130001 Furnish and Install Surface Sensor Cable, Vaisala Type V Multi-Conductor (Alternate 1)	LF	4,350
901002 Seeding (Alternate 1)	AC	2
905002 Topsoil (Obtained on Site or Removed from Stockpile)(Alternate 1)	CY	1,800
908002 Mulching, Netted/Binded (Alternate 1)	SY	10,800

GENERAL NOTES:

- THIS PROJECT IS SUBJECT TO ALL INSPECTIONS PROVIDED IN THE CONTRACT DOCUMENTS AND TO INSPECTIONS BY REPRESENTATIVES OF ERIE REGIONAL AIRPORT AUTHORITY (ERAA), MILLCREEK TOWNSHIP AND ERIE COUNTY CONSERVATION DISTRICT.
- ACCESS TO THE SITE - THE CONTRACTOR'S ACCESS POINTS TO THE SITE WILL BE VERIFIED AT THE PRE-CONSTRUCTION MEETING.
- HAUL ROUTES - IT SHALL BE THE CONTRACTOR'S RESPONSIBILITY TO COORDINATE OFF-SITE HAUL ROUTES (STATE HIGHWAYS, COUNTY ROADS, OR LOCAL ROADS) WITH THE APPROPRIATE OWNER WHO HAS JURISDICTION OVER THE AFFECTED ROUTE. ON-SITE HAUL ROUTES SHALL BE MAINTAINED BY THE CONTRACTOR AND SHALL BE RESTORED TO THE PRE-CONSTRUCTION CONDITION UPON COMPLETION OF USE AS A HAUL ROUTE. THE BEFORE AND AFTER CONDITION OF ON-SITE HAUL ROUTES SHALL BE JOINTLY INSPECTED BY THE CONTRACTOR AND THE ENGINEER PRIOR TO COMMENCING WORK.
- THE CONTRACTOR'S LAYDOWN AREA AND STAGING AREA WILL BE VERIFIED AT THE PRE-CONSTRUCTION MEETING. CONTRACTOR'S LAYDOWN AND STAGING AREA SHALL BE MAINTAINED BY THE CONTRACTOR AND SHALL BE RESTORED TO THE PRE-CONSTRUCTION CONDITION UPON COMPLETION OF THE PROJECT. THE BEFORE AND AFTER CONDITION OF THE LAYDOWN AND STAGING AREA SHALL BE JOINTLY INSPECTED BY THE CONTRACTOR AND ENGINEER. CONTRACTOR'S LAYDOWN DOCUMENTATION AND RESTORATION INCIDENTAL TO MOBILIZATION ITEM.
- THE EXISTING CONDITIONS SHOWN ON THESE PLANS WERE DEVELOPED FROM RECORD PLANS AND SURVEY DATA AND ARE THE ANTICIPATED CONDITIONS AT THE COMMENCEMENT OF CONSTRUCTION. PRIOR TO BID, THE CONTRACTOR SHALL VERIFY ALL EXISTING CONDITIONS. THE CONTRACTOR SHALL NOTIFY THE ENGINEER PRIOR TO BID OF ANY DISCREPANCIES BETWEEN THE BID DOCUMENTS AND THE EXISTING CONDITIONS.
- THE APPROXIMATE LOCATIONS OF KNOWN AIRPORT UNDERGROUND UTILITIES ARE SHOWN ON THE PLANS AND ARE NOT WARRANTED TO BE CORRECT. PRIOR TO ANY EXCAVATION THE CONTRACTOR SHALL CALL THE PENNSYLVANIA ONE CALL SYSTEM, INC. AT 1-800-242-1776. THE CONTRACTOR MUST VERIFY THE EXACT LOCATION OF UTILITIES PRIOR TO THE START OF CONSTRUCTION. IN THE EVENT THAT THE CONTRACTOR DAMAGES A UTILITY, THE ENGINEER MUST BE NOTIFIED IMMEDIATELY. THE REPAIR MUST BE STARTED IMMEDIATELY AND CONTINUED UNTIL SERVICE HAS BEEN FULLY RESTORED AND THE REPAIRS ARE COMPLETE. ALL SUCH REPAIRS SHALL BE AT THE CONTRACTOR'S EXPENSE AND SHALL BE INSPECTED AND APPROVED BY THE ENGINEER AND THE UTILITY OWNER PRIOR TO BACKFILL BY THE CONTRACTOR. IF REQUIRED BY THE ENGINEER, THE CONTRACTOR SHALL SUPPLY AND INSTALL A CONCRETE MARKER AT ALL APPLICABLE LOCATIONS AT NO ADDITIONAL EXPENSE TO THE OWNER.
- THE CONTRACTOR SHALL COORDINATE ALL CONSTRUCTION ACTIVITIES WITH THE ENGINEER, OTHER CONTRACTORS, AND UTILITY COMPANIES WITHIN THE PROJECT LIMITS.
- ANY WORK PERFORMED WITHOUT THE KNOWLEDGE AND APPROVAL OF THE ENGINEER IS SUBJECT TO REMOVAL AND REPLACEMENT AT THE CONTRACTOR'S EXPENSE.
- THE ENGINEER MAY SUSPEND THE WORK BY WRITTEN NOTICE WHEN, IN HIS/HER JUDGMENT, PROGRESS IS UNSATISFACTORY. WORK BEING DONE IS UNAUTHORIZED OR DEFECTIVE, WEATHER CONDITIONS ARE UNSUITABLE, OR THERE IS DANGER TO THE PUBLIC HEALTH, SAFETY, OR AIRFIELD SAFETY.
- APPROVAL OF A PORTION OF THE WORK IN PROGRESS DOES NOT GUARANTEE ITS FINAL ACCEPTANCE. TESTING AND EVALUATION MAY CONTINUE UNTIL FINAL ACCEPTANCE OF A COMPLETE WORKABLE UNIT IS PROVIDED IN WRITING.
- ACCEPTANCE OF COMPLETED WORK WILL NOT BE GIVEN UNTIL DEFECTIVE OR UNAUTHORIZED WORK IS REMOVED AND FINAL CLEAN-UP IS COMPLETE.
- CONTRACTOR RESPONSIBLE TO KEEP PUBLIC ROADS FREE OF DEBRIS BETWEEN THE CONTRACTOR STAGING AREA AND AIRFIELD ACCESS POINT.
- PRIOR TO REOPENING TEMPORARILY CLOSED AIRFIELD PAVEMENTS, THE AREA MUST BE THOROUGHLY CLEANED OF ALL DEBRIS AND INSPECTED AND APPROVED BY THE ENGINEER AND AIRPORT PERSONNEL.
- CONTRACTOR'S PERSONNEL SHALL PARK IN CONTRACTOR STAGING AREAS.
- THE CONTRACTOR SHALL CONDUCT ITS ACTIVITIES IN A SAFE MANNER AS SPECIFIED IN THE CONTRACT DOCUMENTS.
- THE HORIZONTAL CONTROL IS TIED TO THE PENNSYLVANIA STATE PLANE COORDINATE SYSTEM (SPSC 83), PA NORTH AND IS RELATIVE TO THE PAC'S AND SAC'S MONUMENTS AT THE AIRPORT.
- VERTICAL CONTROL IS BASED UPON THE NORTH AMERICAN VERTICAL DATUM OF 1988 (NAVD88) AND IS RELATIVE TO THE PAC'S AND SAC'S MONUMENTS AT THE AIRPORT.
- ALL EROSION AND SEDIMENTATION POLLUTION CONTROL DEVICES SHALL BE INSPECTED WEEKLY AND AFTER EACH RUNOFF EVENT.

Mead & Hunt
 Mead and Hunt, Inc.
 1007 N. Front Street
 Suite 4N
 Harrisburg, PA 17102
 phone: 971-256-9307
 meadhunt.com

These documents shall not be used for any purpose or project for which it is not intended. Mead & Hunt shall be indemnified by the client and shall be harmless and released from all claims, damages, liabilities, losses, and expenses, including attorney's fees and costs, arising out of such misuse or reuse of the documents. In addition, unauthorized reproduction of these documents, in part or in whole, is prohibited.

**ERIE INTERNATIONAL AIRPORT
 REALIGNMENT & RECONSTRUCTION
 OF TAXIWAY A - PHASE 3
 4411 WEST 12TH STREET
 ERIE, PENNSYLVANIA**

ISSUED 05/17/2024 ISSUED FOR BID
 05/31/2024 ADDENDA #1

PENNSYLVANIA ACT 287, as amended

REQUIRES NOTIFICATION TO UTILITY COMPANIES PRIOR TO ANY DIGGING, DRILLING, BLASTING OR EXCAVATING. CONTRACTOR SHALL CONTACT:



PA ONE-CALL
1-800-242-1776
 PRIOR TO START OF WORK.

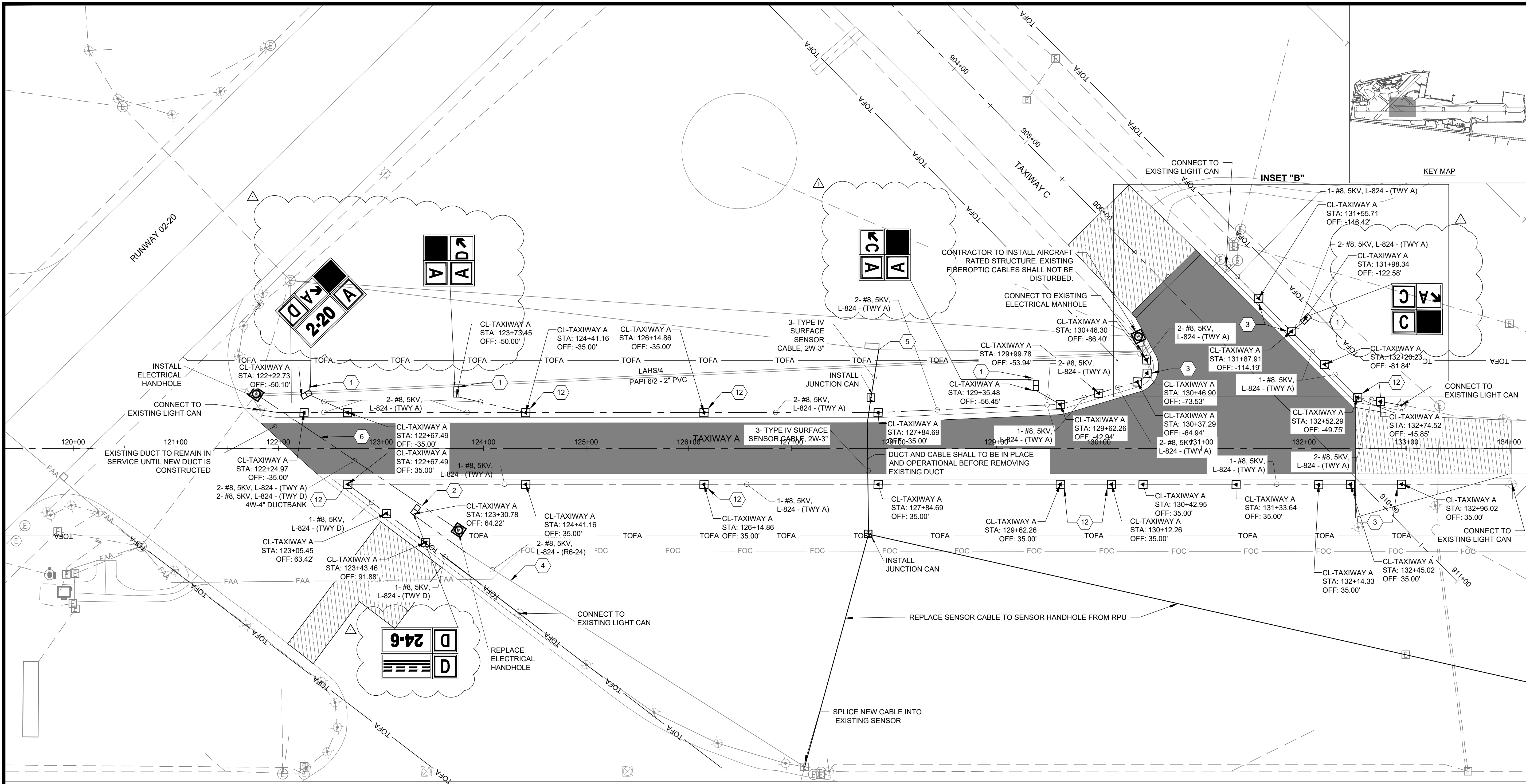
EXISTING UTILITIES HAVE BEEN PLOTTED FROM AVAILABLE INFORMATION AND THE LOCATIONS MUST BE CONSIDERED APPROXIMATE. OTHER UTILITIES MAY EXIST WHICH ARE NOT SHOWN. IT SHALL BE THE CONTRACTOR'S RESPONSIBILITY TO ASCERTAIN THE PHYSICAL LOCATION OF ALL UTILITY LINES PRIOR TO THE START OF CONSTRUCTION.

AIP NO: 3-42-030-XXX-2024
 M&H NO: 3225600-192499.05
 DATE: MAY 17, 2024
 DESIGNED BY: RGM
 DRAWN BY: PSH/RGM
 CHECKED BY: BDH
 DO NOT SCALE DRAWINGS

SHEET CONTENTS
 GENERAL NOTES

SHEET NO. 3 of 27

G-003



ERIE INTERNATIONAL AIRPORT REALIGNMENT & RECONSTRUCTION OF TAXIWAY A - PHASE 3 4411 WEST 12TH STREET ERIE, PENNSYLVANIA

These documents shall not be used for any purpose or project for which it is not intended. Mead & Hunt shall be indemnified by the client and held harmless and released from all claims, damages, liabilities, losses, and expenses, including attorneys' fees and costs, arising out of such misuse or reuse of the documents. In addition, unauthorized reproduction of these documents, in part or in whole, is prohibited.

ISSUED 05/17/2024 ISSUED FOR BID 05/31/2024
ADDENDA #1

KEYNOTES:

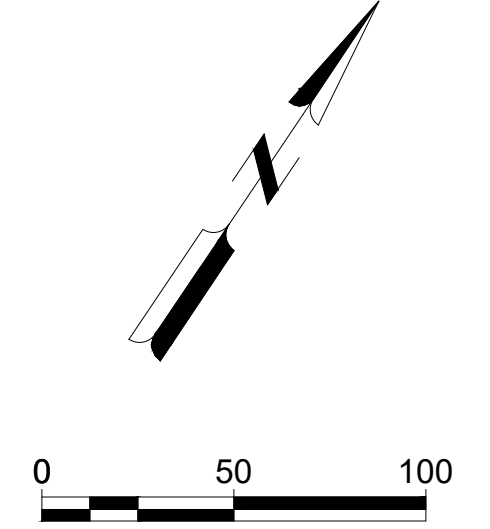
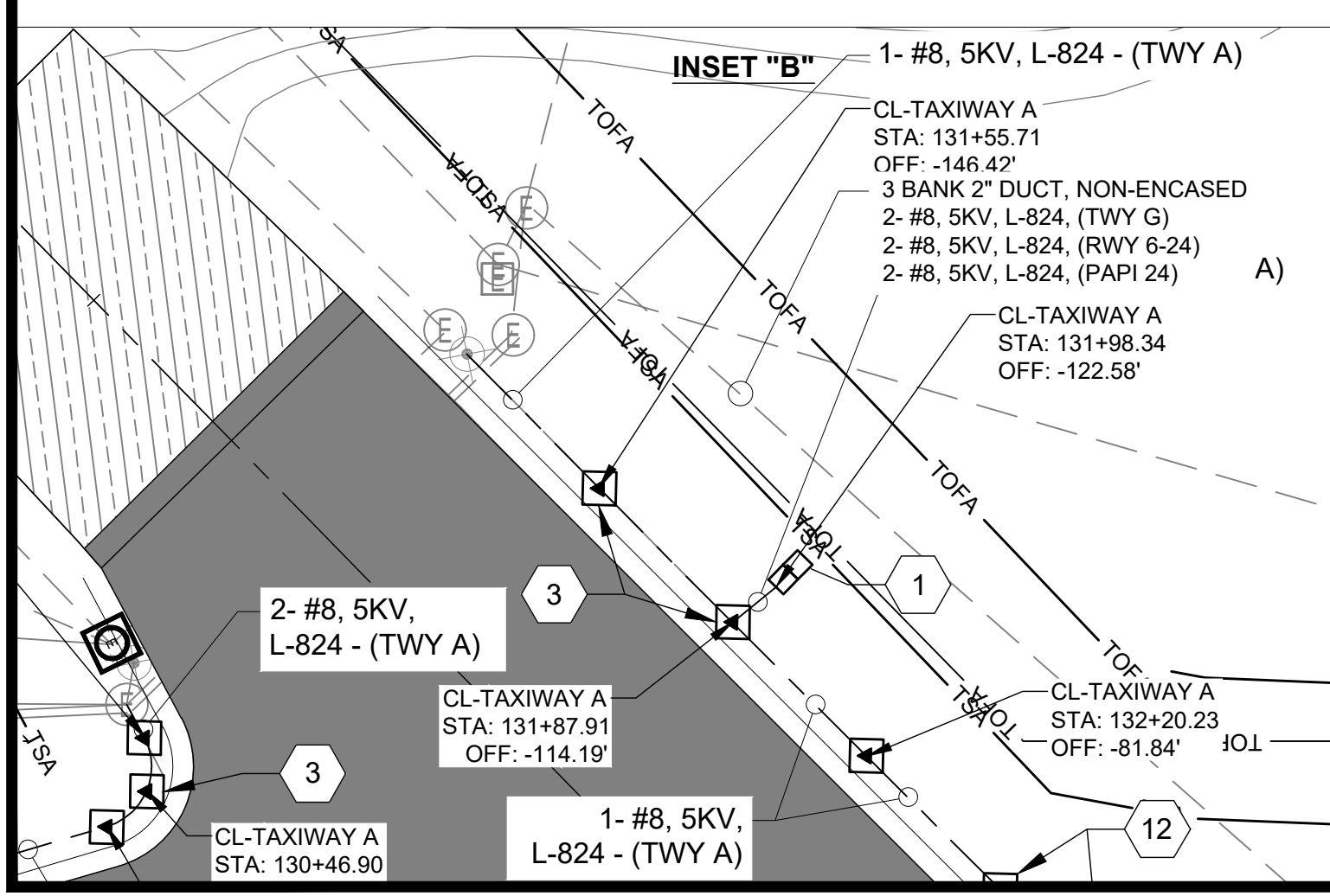
- 1 FURNISH AND INSTALL L-858(L) LED INTERNALLY ILLUMINATED AIRFIELD GUIDANCE SIGN, PRECAST SIGN FOUNDATION, L-830 ISOLATION TRANSFORMER, L-823 CONNECTORS, AND FOUNDATION.
- 2 REINSTALL AIRFIELD GUIDANCE SIGN, PRECAST FOUNDATION, AND ISOLATION TRANSFORMER.
- 3 FURNISH AND INSTALL L-867B LIGHT BASE AND L-823 CONNECTORS. REINSTALL ELEVATED TAXIWAY EDGE LIGHT FIXTURE, BASE PLATE, AND ISOLATION TRANSFORMER.
- 4 CONNECT CONDUIT TO EXISTING CONDUIT STUB.
- 5 FURNISH AND INSTALL (3) TYPE 5 SENSOR CABLES FROM RPU TO JUNCTION LIGHT BASE LOCATED ON THE SOUTH SIDE OF TAXIWAY A. MAKE CONNECTIONS AND SPLICES TO RESTORE CIRCUITS.
- 6 DUCTBANK INSTALLATION SHALL BE PHASED WITH THE REMOVAL OF EXISTING DUCTBANK.
- 7 FURNISH AND INSTALL 2W-3" DUCTBANK AND MAKE CONNECTIONS TO EXISTING RPU UNIT.
- 8 CONNECT CONDUIT TO EXISTING CONDUIT. FURNISH AND INSTALL SERIES LIGHTING CABLE FROM SIGN TO EXISTING HANDHOLE.
- 9 CONNECT CONDUIT TO EXISTING LIGHT BASE CONDUIT STUB. FURNISH AND INSTALL SERIES LIGHTING CABLE AND MAKE NECESSARY CONNECTIONS.
- 10 FURNISH AND INSTALL L-861(L) LED ELEVATED TAXIWAY EDGE LIGHT FIXTURE, L-830 ISOLATION TRANSFORMER, ARCTIC KIT, L-823 CONNECTORS AND L-867B CLASS 1A LIGHT BASE.
- 11 ROUTE THE THREE (3) TYPE V SURFACE SENSOR CABLES INTO EXISTING JUNCTION LIGHT BASE AND SPLICE TO EXISTING CABLE.
- 12 FURNISH AND INSTALL L-867B LIGHT BASE AND L-823 CONNECTORS. INSTALL ELEVATED TAXIWAY EDGE LIGHT FIXTURE, BASE PLATE, AND ISOLATION TRANSFORMER.

LEGEND

- PROPOSED ELECTRICAL MANHOLE
- EXISTING ELECTRICAL MANHOLE
- EXISTING ELECTRICAL JUNCTION STRUCTURE
- PROPOSED ELEVATED MITL (NEW BASE)
- EXISTING / PROPOSED TAXIWAY GUIDANCE SIGN
- EXISTING ELEVATED MITL
- EXISTING ELEVATED MITL (PHASE 1 CONSTRUCTION)
- 1-#8, 5KV, L-824, DUCT AS SHOWN
- 2-#8, 5KV, L-824, DUCT AS SHOWN
- PROPOSED ELECTRICAL DUCT BANK
- EXISTING ELECTRICAL DUCT BANK

ELECTRICAL INSTALLATION NOTES:

- #8 SOLID BARE COUNTERPOISE IS NOT SHOWN FOR CLARITY. COUNTERPOISE SHALL BE INSTALLED MID-WAY BETWEEN PROPOSED EDGE LIGHTS AND PAVEMENT EDGE. FOR HOMERUNS, COUNTERPOISE SHALL BE INSTALLED ABOVE PROPOSED CONDUIT PER L-108.
- EXISTING DUCT BANKS SHALL NOT REQUIRE NEW COUNTERPOISE.



SHEET CONTENTS
ELECTRICAL PLAN

SHEET NO. 25 of 27

E-201

X:\32256001\92499_05\TECH\CAD\E-201 ELECTRICAL PLAN.DWG 5/31/2024 8:59:40 AM